



WWW.AVIRONACTIVE.COM

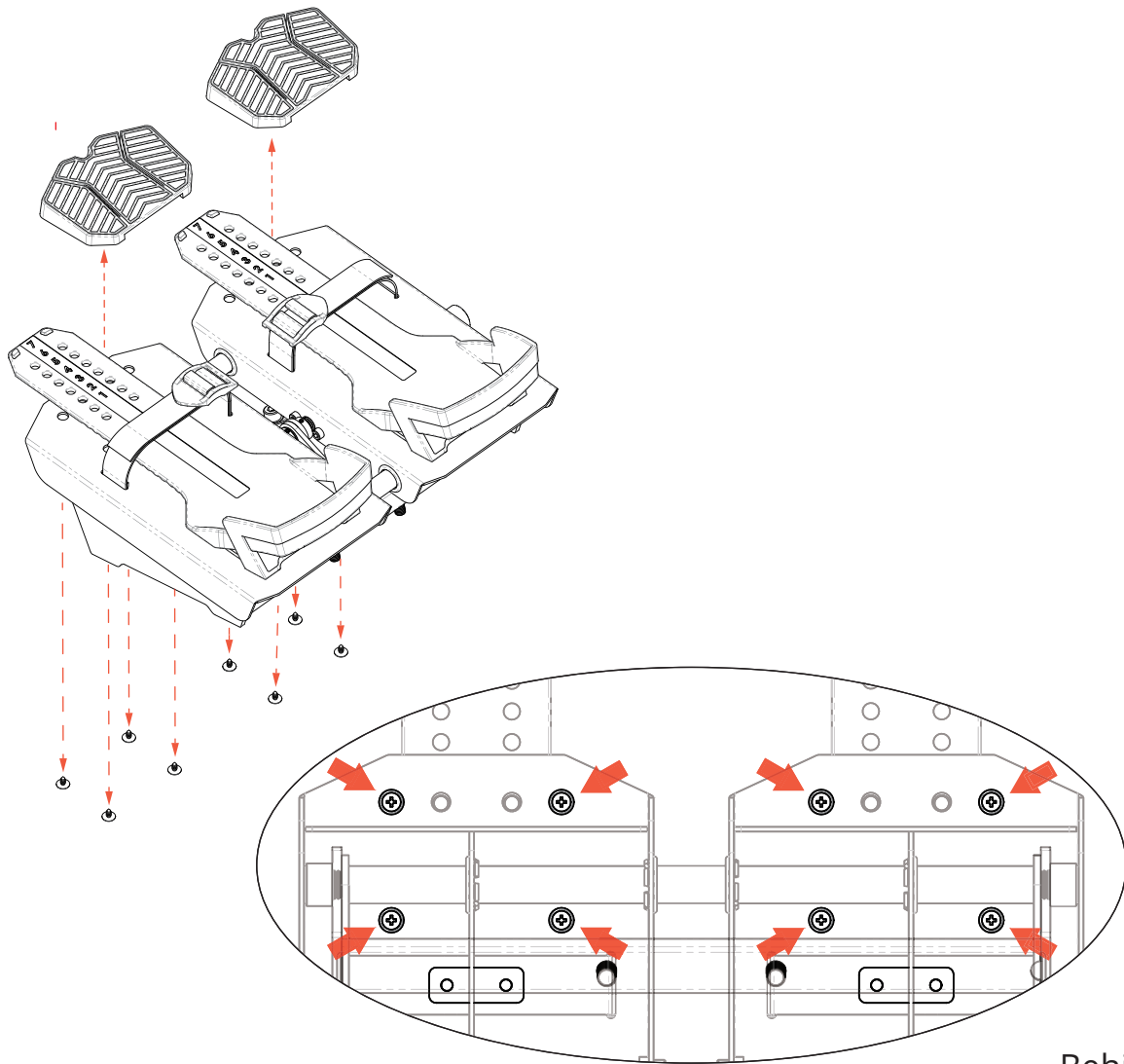
FOOT STRAPS

USER INSTALLATION

REPLACEMENT INSTRUCTIONS

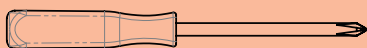
You will need a Phillips screwdriver for this installation

Step 1



Behind

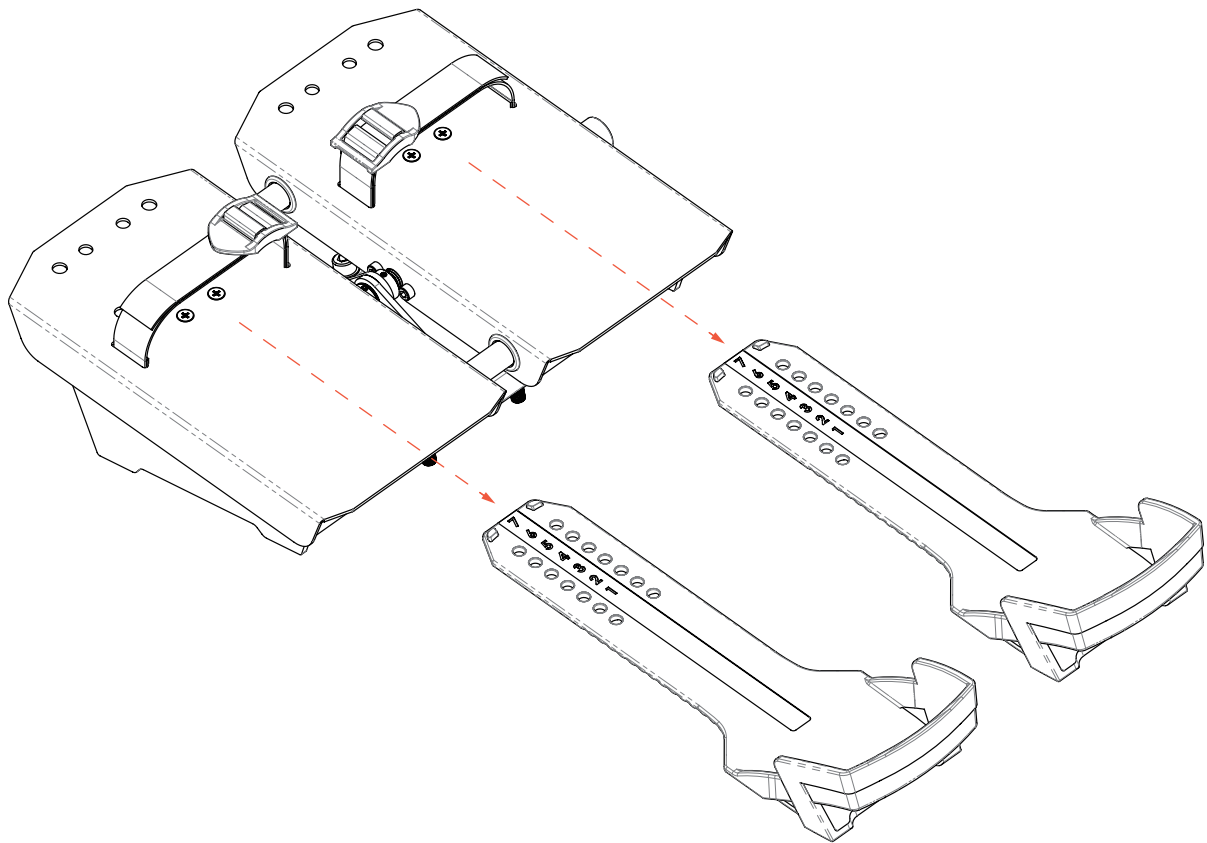
Tools:



Remove 8 screws from behind the foot carriage.

REPLACEMENT INSTRUCTIONS

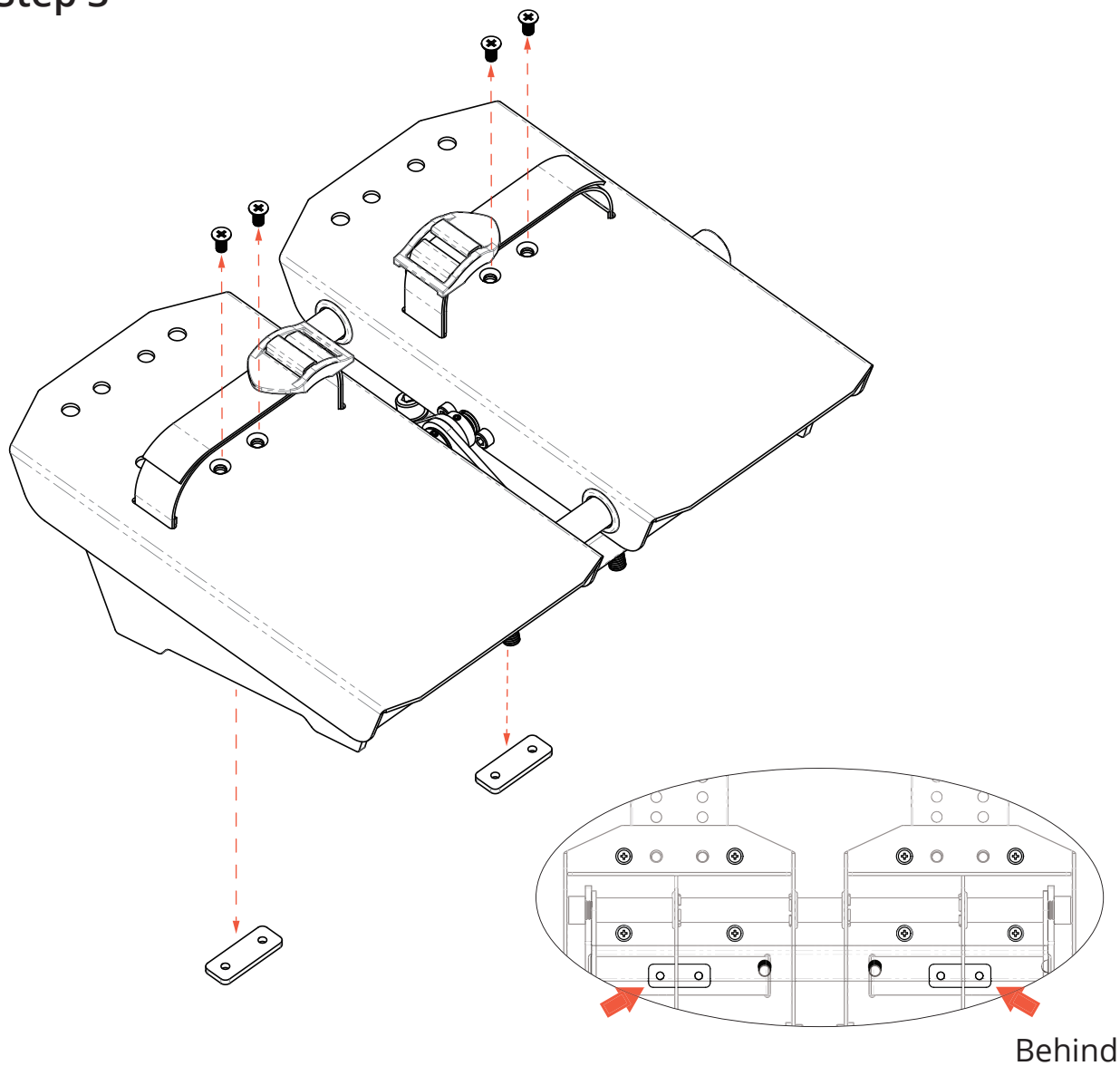
Step 2



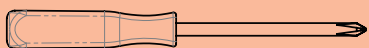
Slide out the foot pedals.

REPLACEMENT INSTRUCTIONS

Step 3



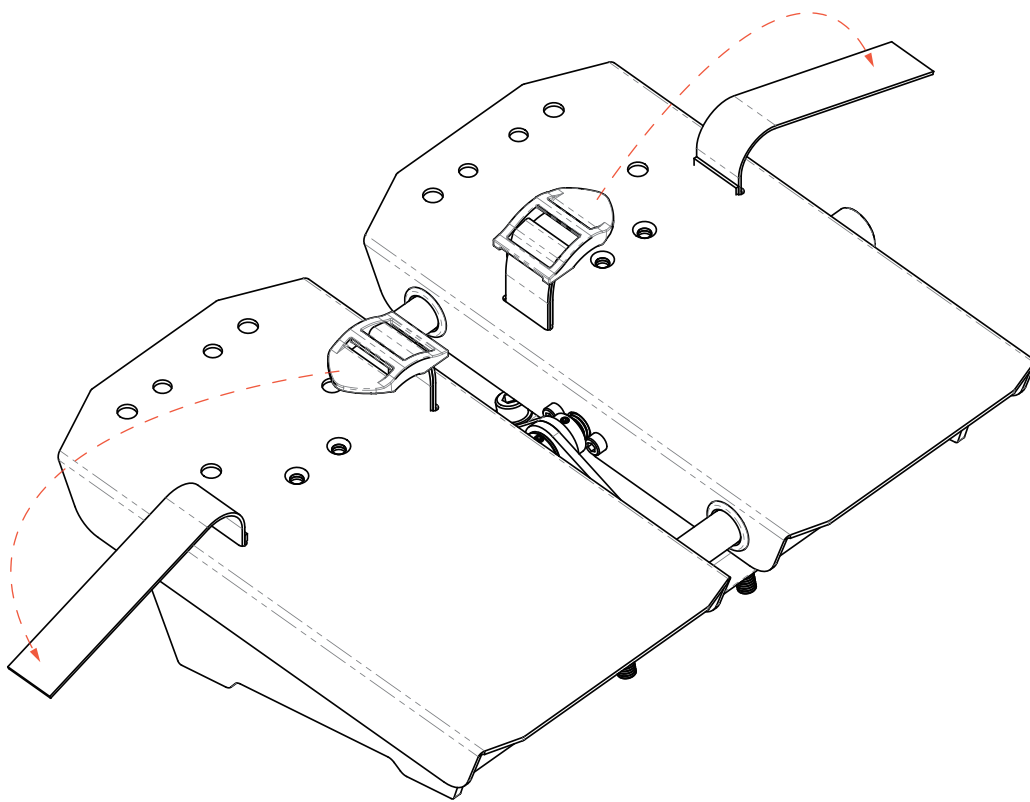
Tools:



Remove the 4 screws from the front.

REPLACEMENT INSTRUCTIONS

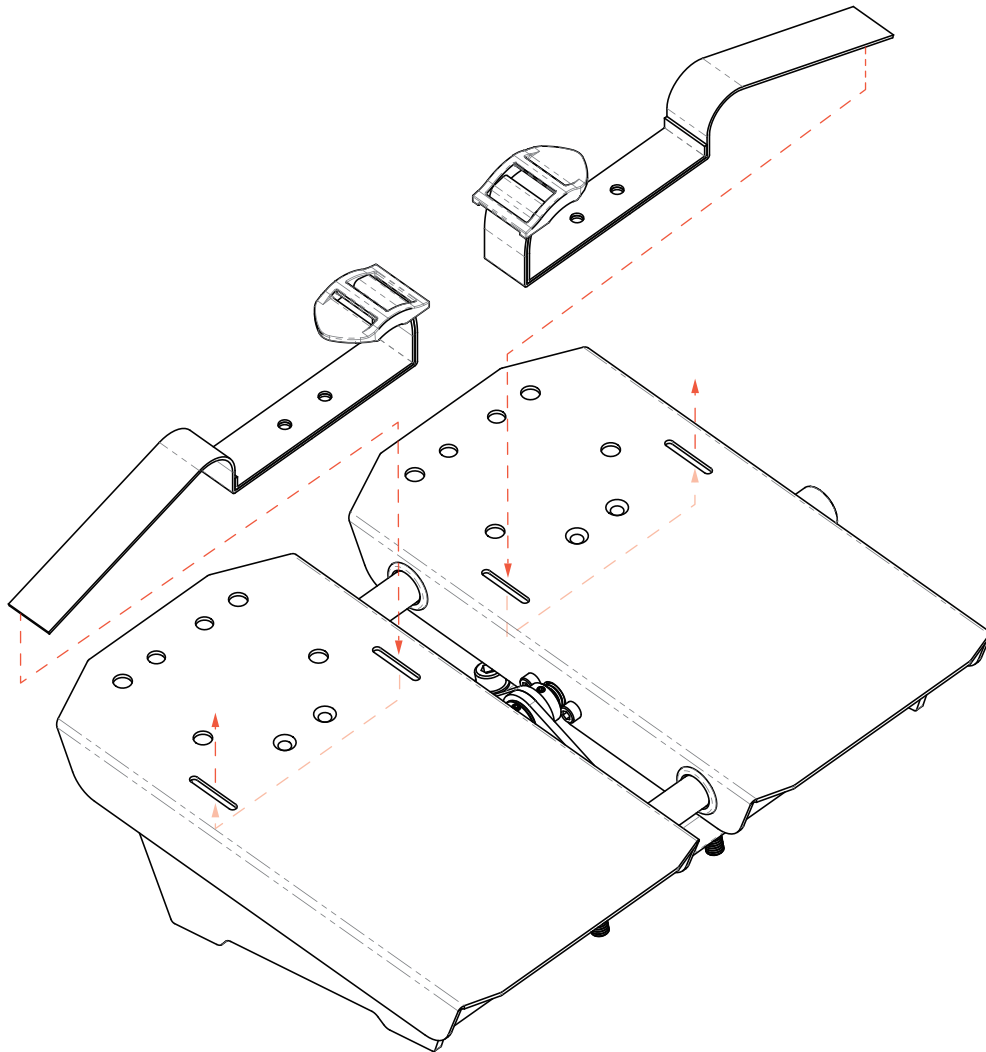
Step 4



Remove the straps.

REPLACEMENT INSTRUCTIONS

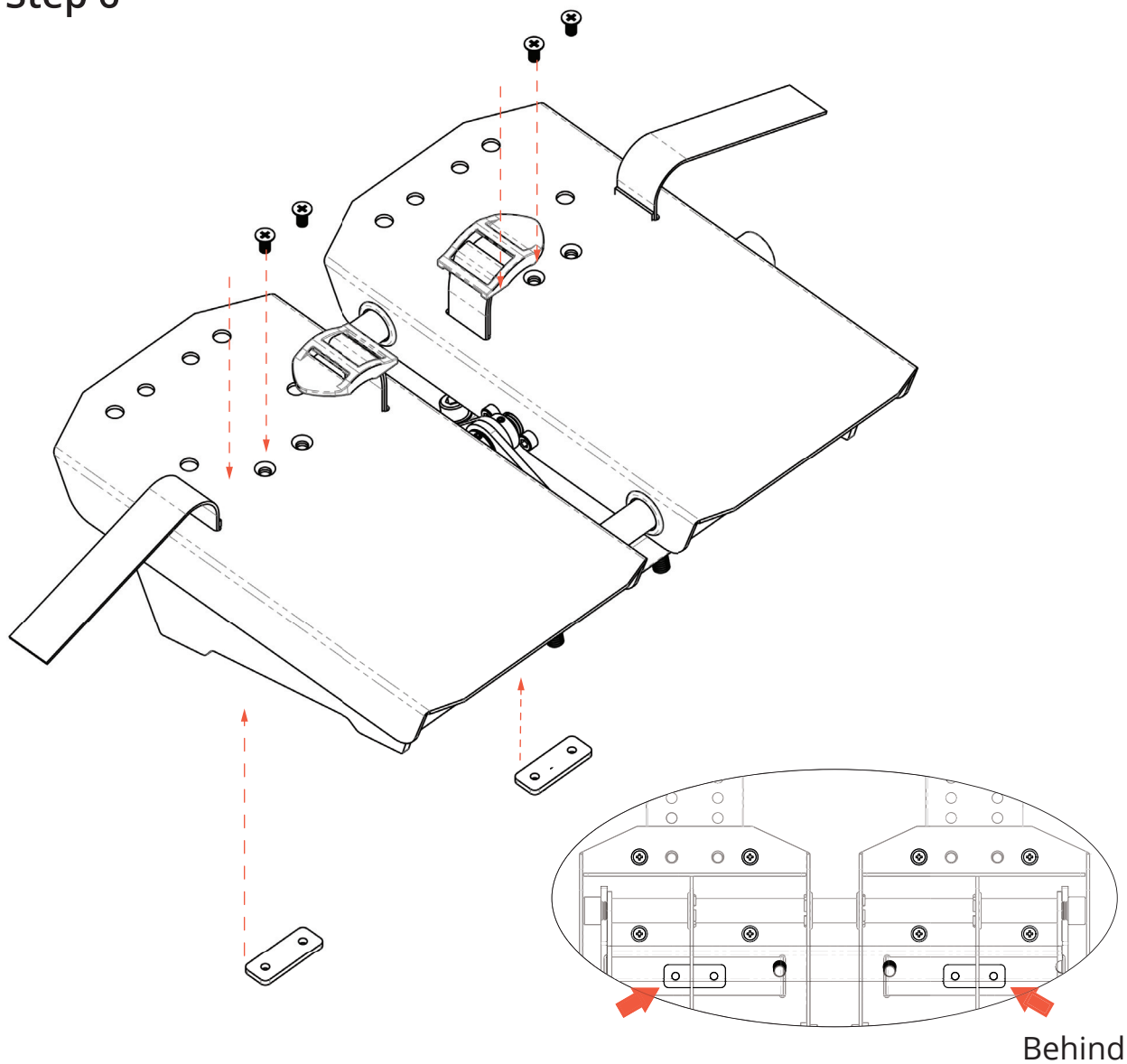
Step 5



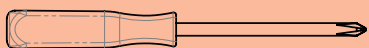
Install the new straps.

REPLACEMENT INSTRUCTIONS

Step 6



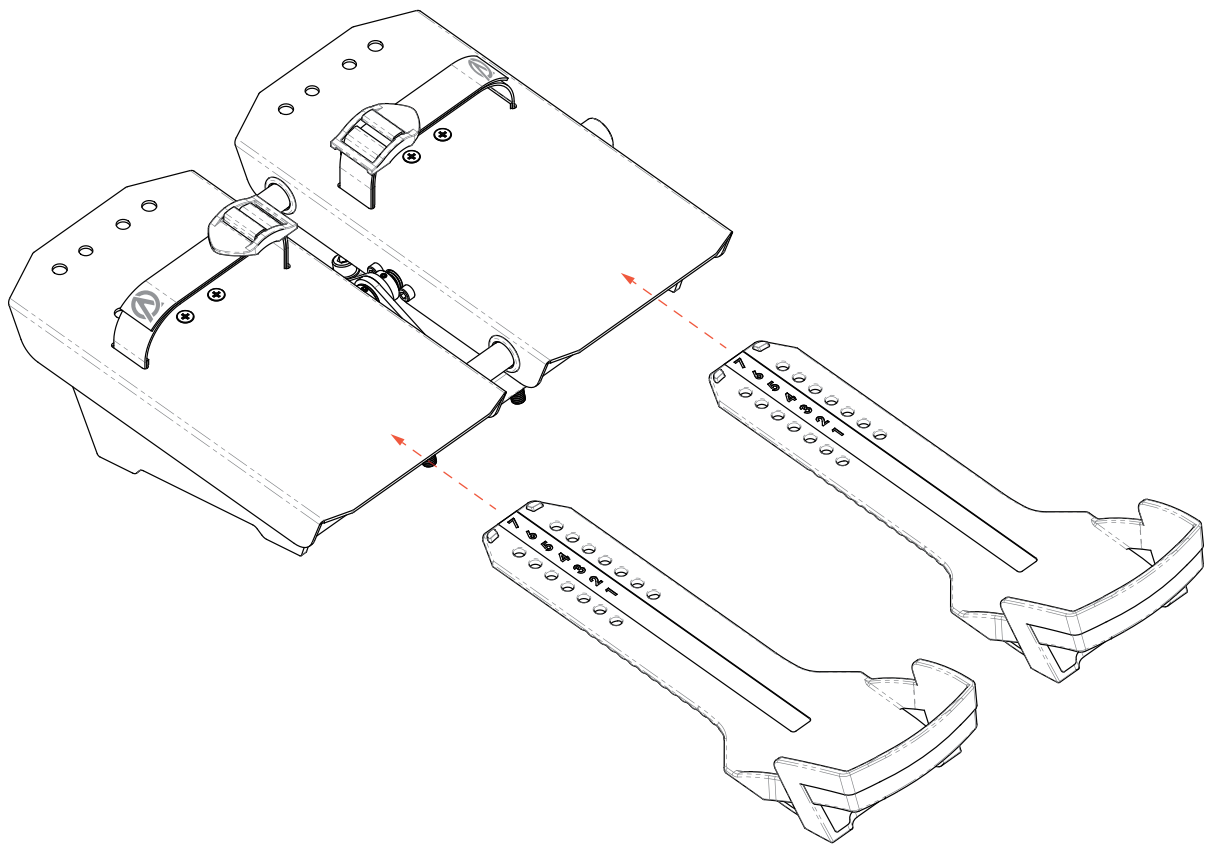
Tools:



Add back 4 screws (from Step 3). Ensure the screws pass through the straps.

REPLACEMENT INSTRUCTIONS

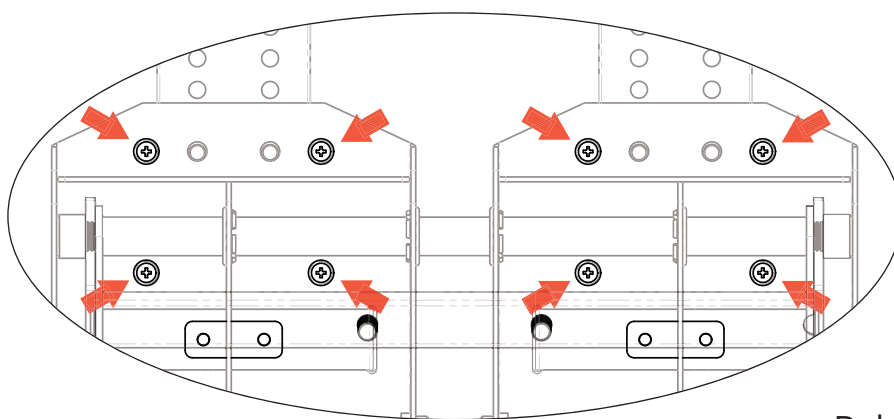
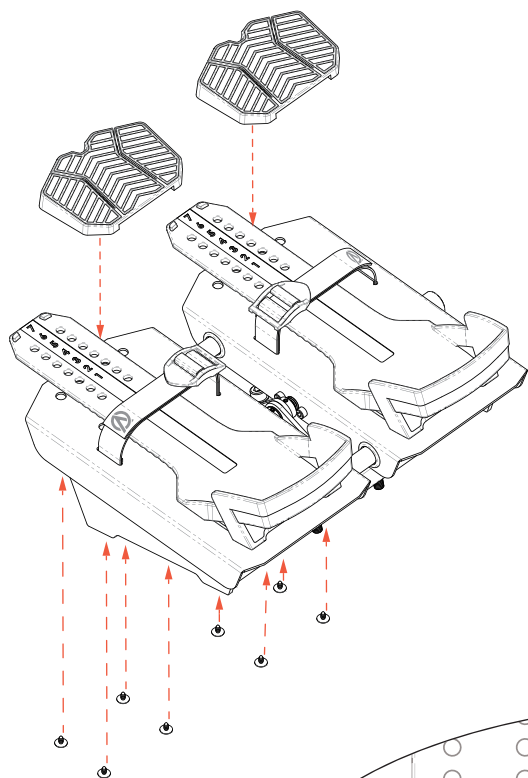
Step 7



Slide in the foot pedals.

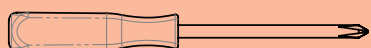
REPLACEMENT INSTRUCTIONS

Step 8



Behind

Tools:



Add back 8 screws (from Step 1) from behind the foot carriage.