

WWW.AVIRONACTIVE.COM

STRONG SERIES ROWER

SERVICE MANUAL

AVIRON ACTIVE

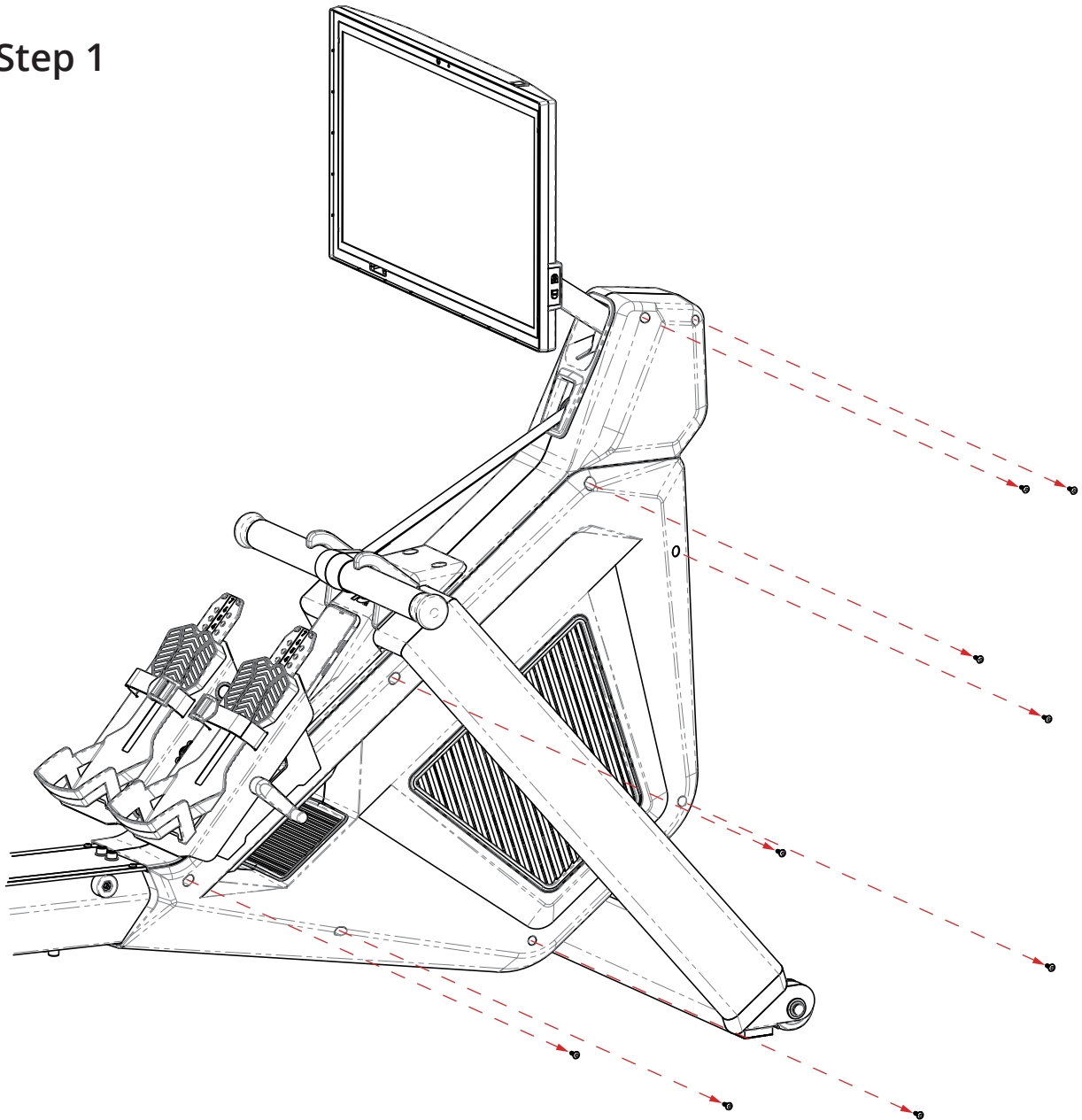
END BORING WORKOUTS

You can find additional help and tutorials on our website www.avironactive.com

TABLE OF CONTENTS

Page	Item	Step
2	Shroud R	1
3	Shroud L	2
4	Tension Cable	1, 3
5	Power Wire Harness	1, 4
9	Data Wire Harness	1, 5
13	Sensor Wire Harness	1, 6
15	Motor	1, 7
16	Fan Wheel Assembly	1, 2, 8
17	Pulley Assembly	1, 2, 9
18	Handle Assembly	10
20	Slider Assembly	11

Step 1



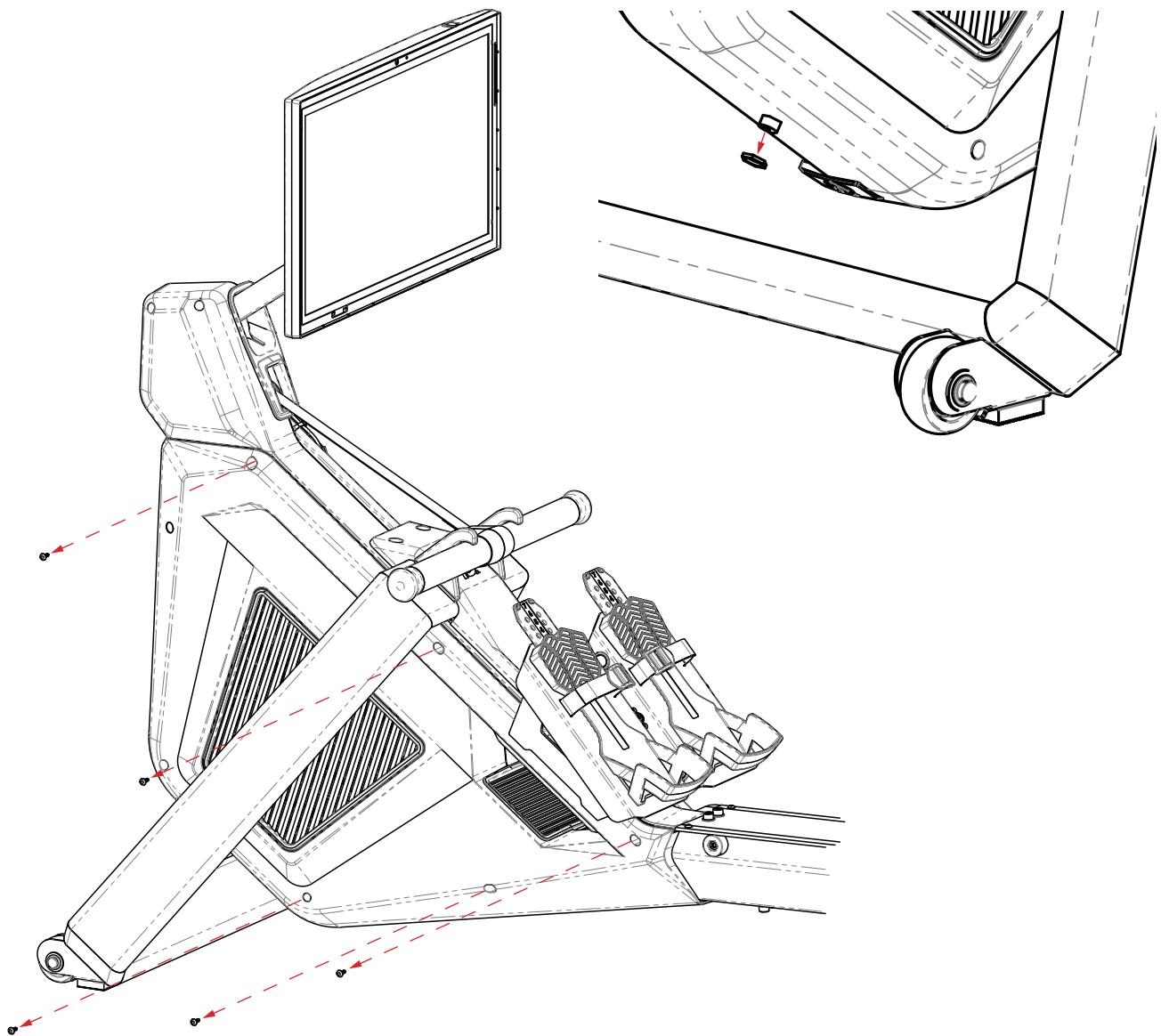
Parts:

Tools:

Fasteners:



Step 2



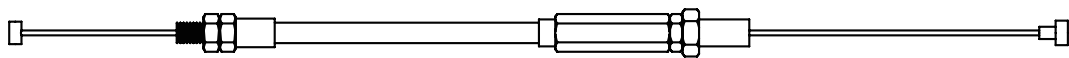
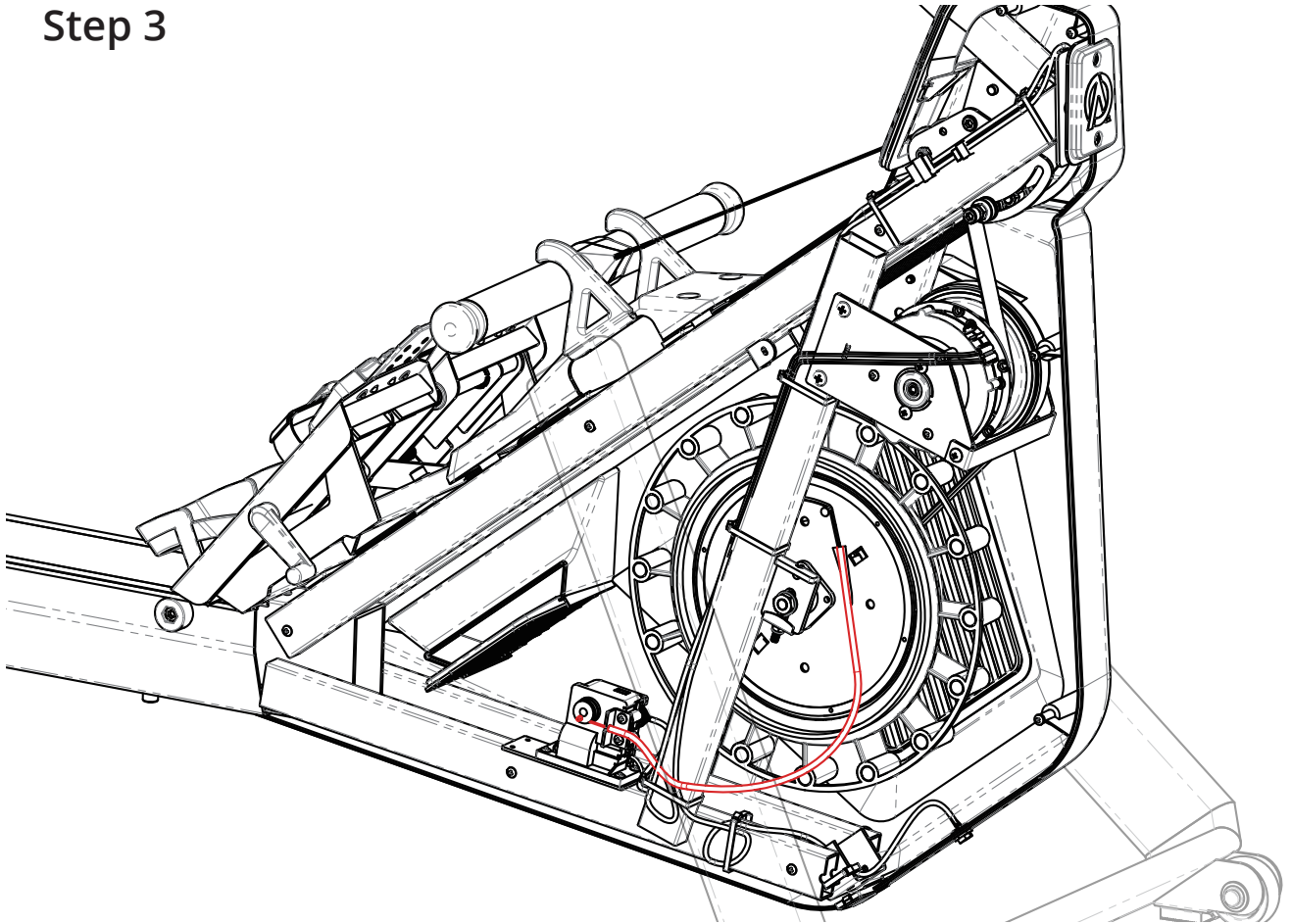
Parts:

Tools:

Fasteners:



Step 3



Tension Cable

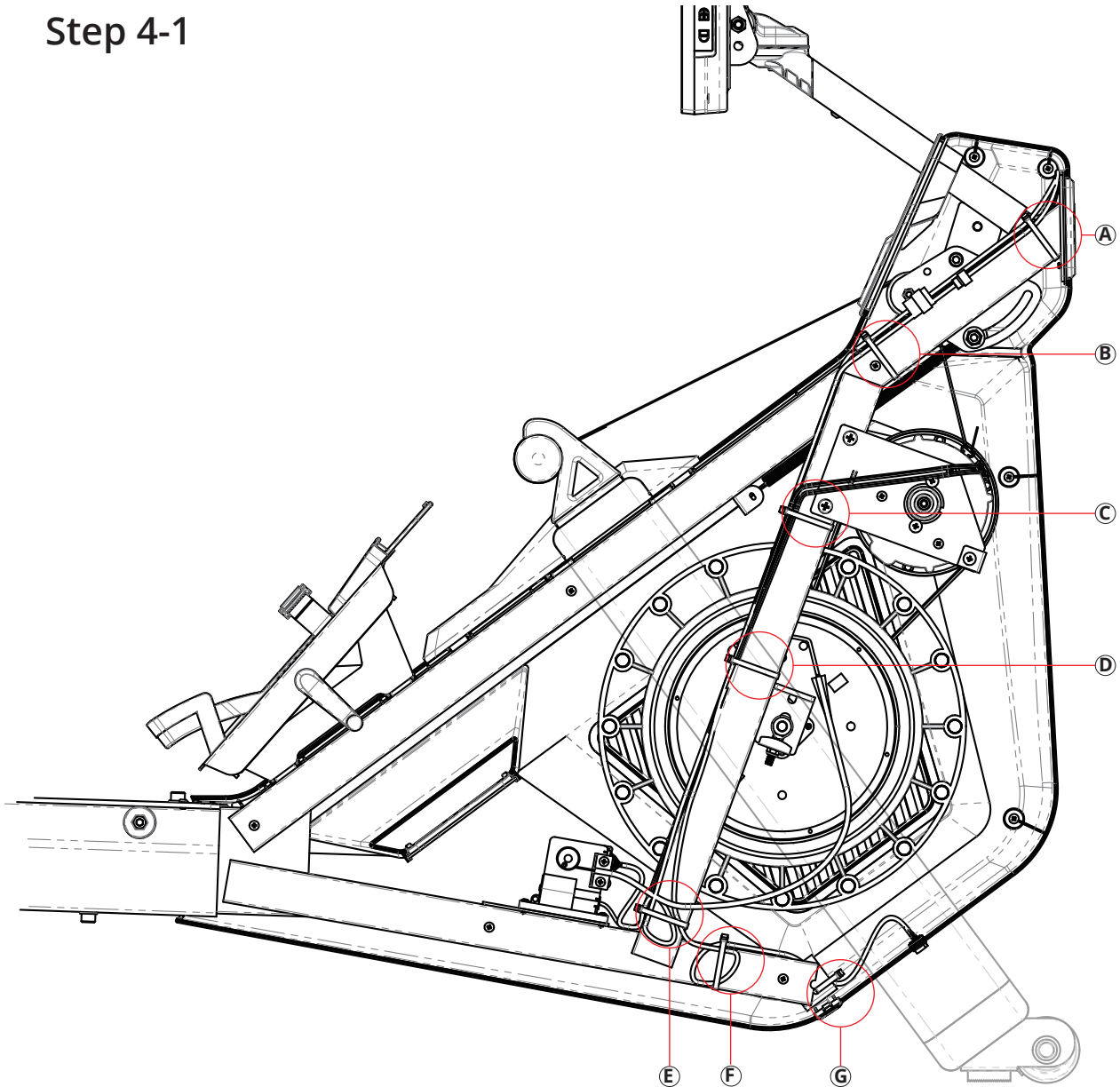
Parts:

Tools:

Fasteners:



Step 4-1



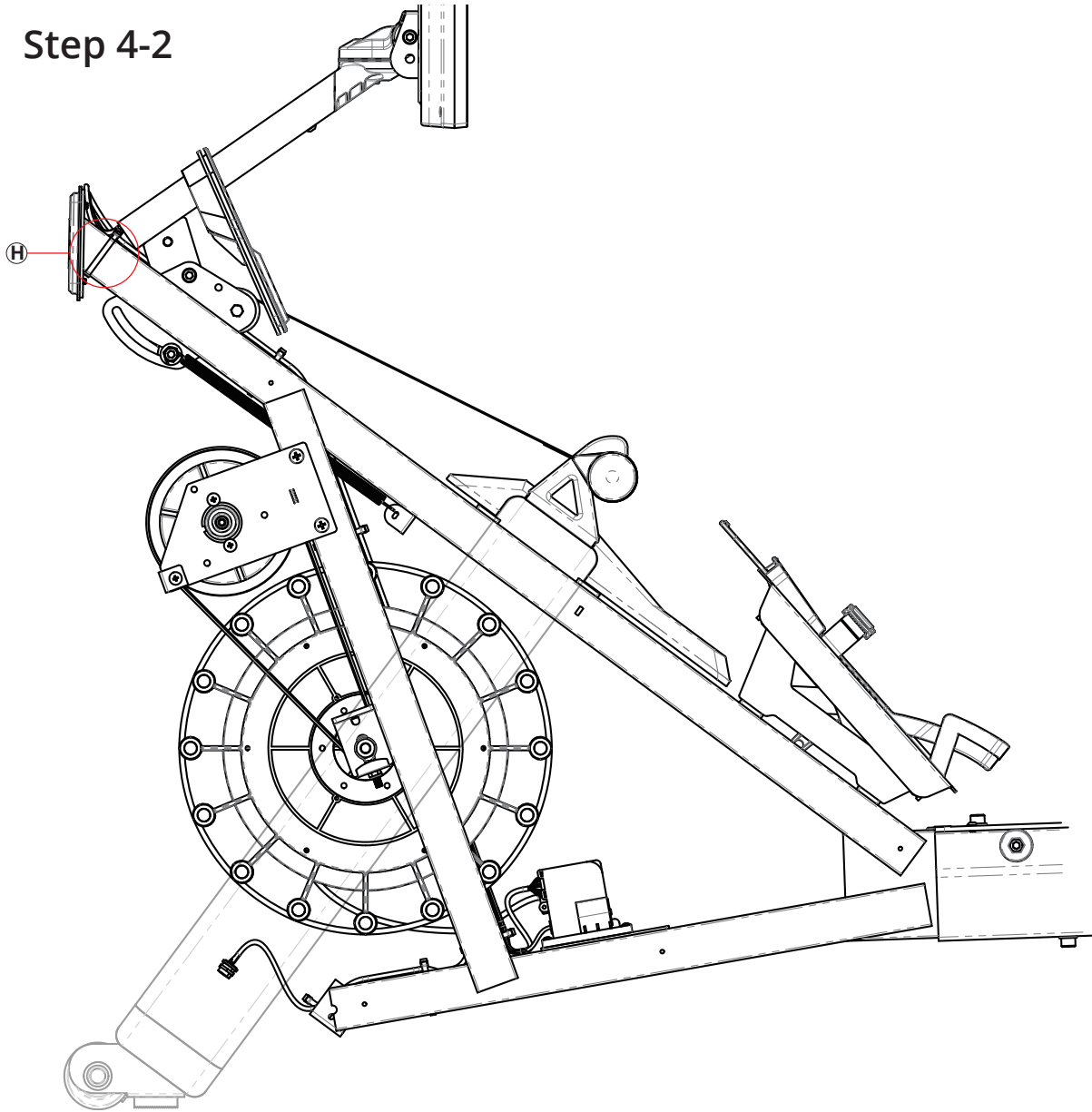
Parts:

Tools:

Fasteners:

Cut zip ties A-H. Upon completion of replacement, add zip ties in the order G, F, E, D, C, B, ensuring power wire harness A extends 2-3" past zip tie B. Connect PWH A+B and add final zip ties A+H. Be careful to not zip tie tension cable.

Step 4-2



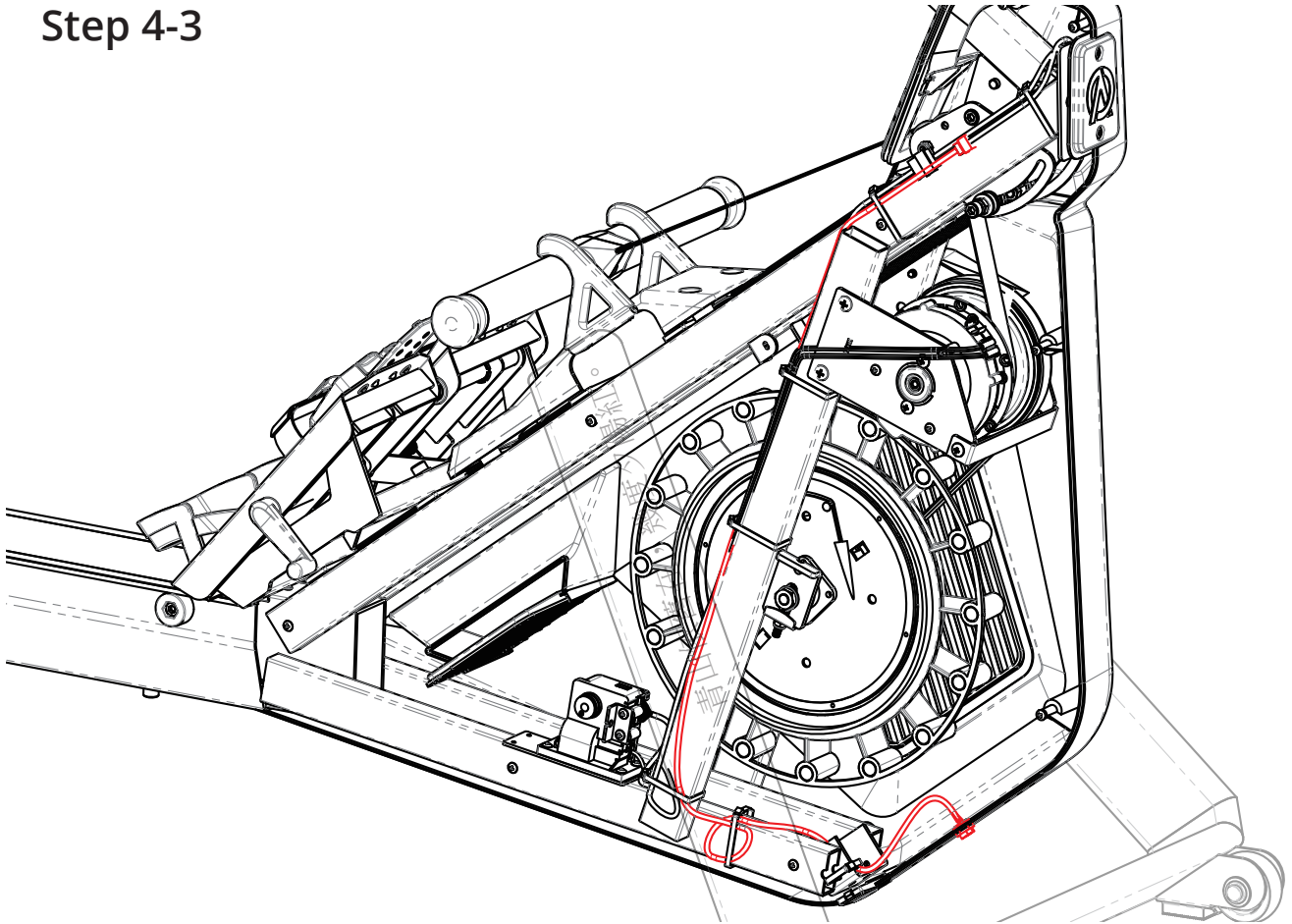
Parts:

Tools:

Fasteners:

Cut zip ties A-H. Upon completion of replacement, add zip ties in the order G, F, E, D, C, B, ensuring power wire harness A extends 2-3" past zip tie B. Connect PWH A+B and add final zip ties A+H. Be careful to not zip tie tension cable.

Step 4-3

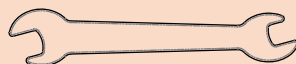


Power Wire Harness A

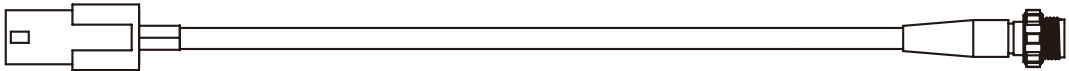
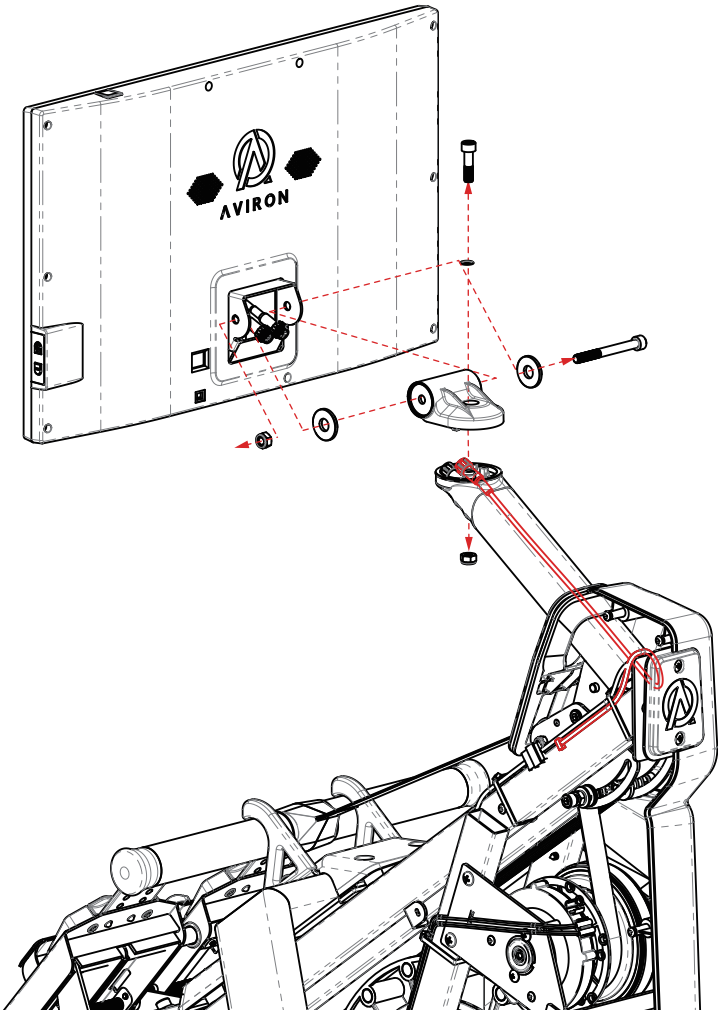
Parts:

Tools:

Fasteners:



Step 4-4



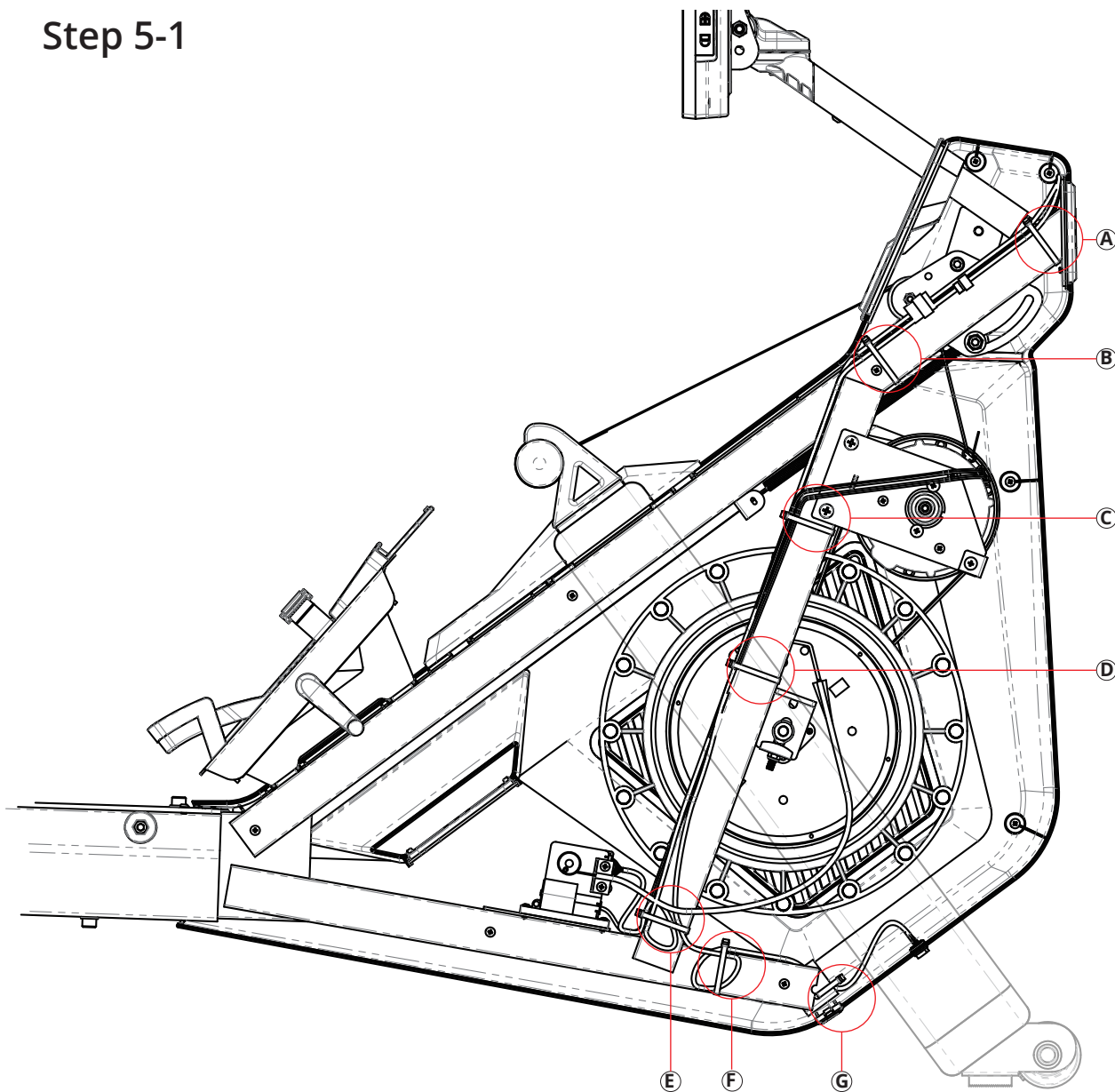
Power Wire Harness B

Parts:

Tools:

Fasteners:

Step 5-1



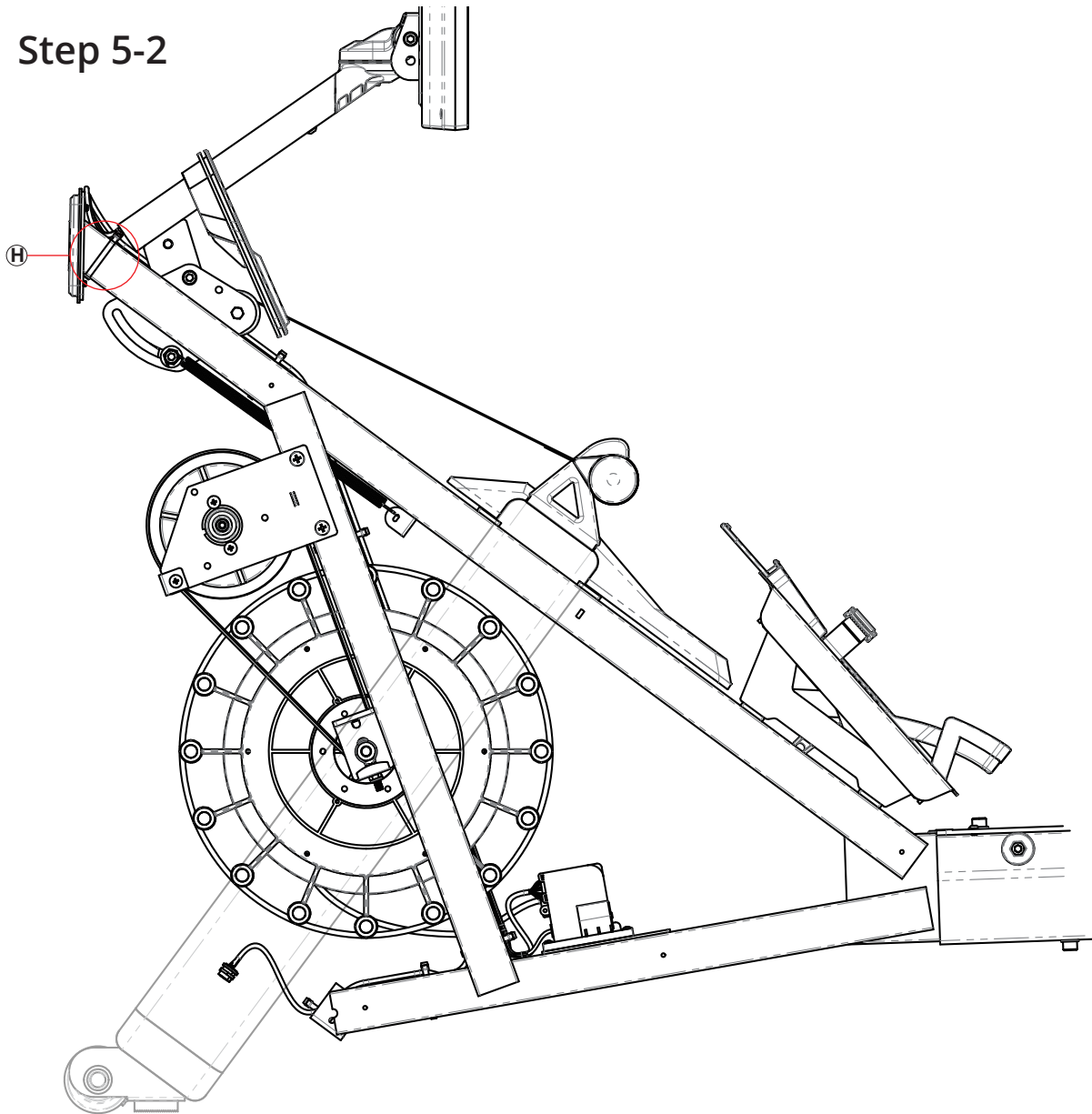
Parts:

Tools:

Fasteners:

Cut zip ties A-H. Upon completion of replacement, add zip ties in the order E, D, C, B, ensuring data wire harness A extends 2-3" past zip tie B. Connect DWH A+B and add final zip ties A+H. Be careful to not zip tie tension cable.

Step 5-2



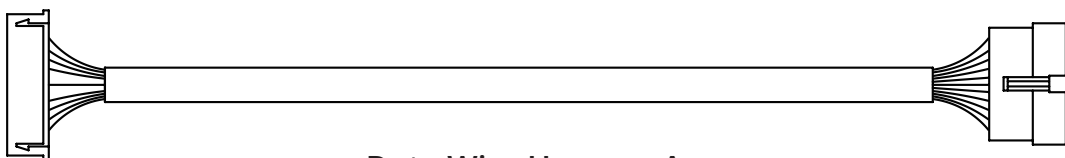
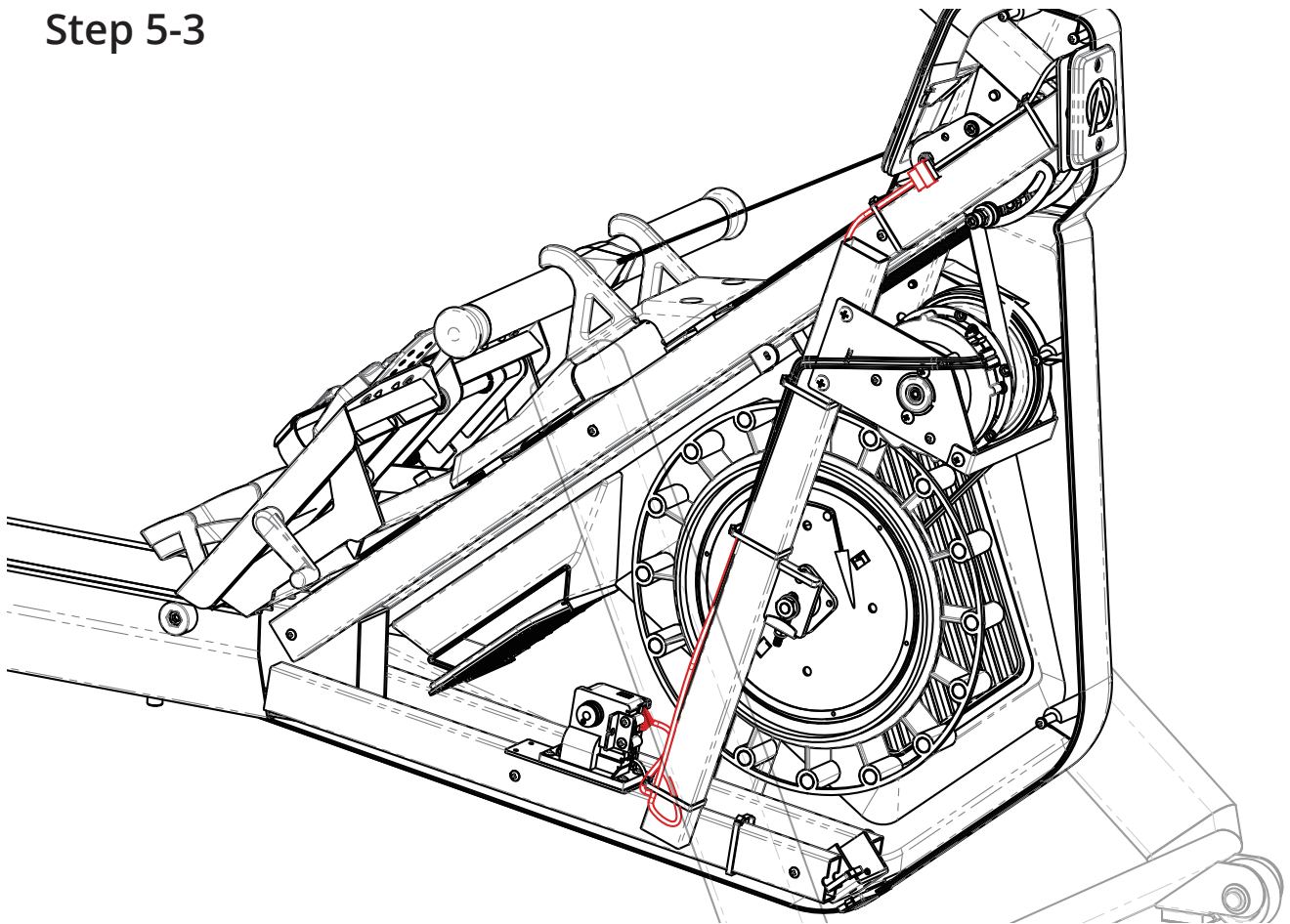
Parts:

Tools:

Fasteners:

Cut zip ties A-H. Upon completion of replacement, add zip ties in the order E, D, C, B, ensuring data wire harness A extends 2-3" past zip tie B. Connect DWH A+B and add final zip ties A+H. Be careful to not zip tie tension cable.

Step 5-3



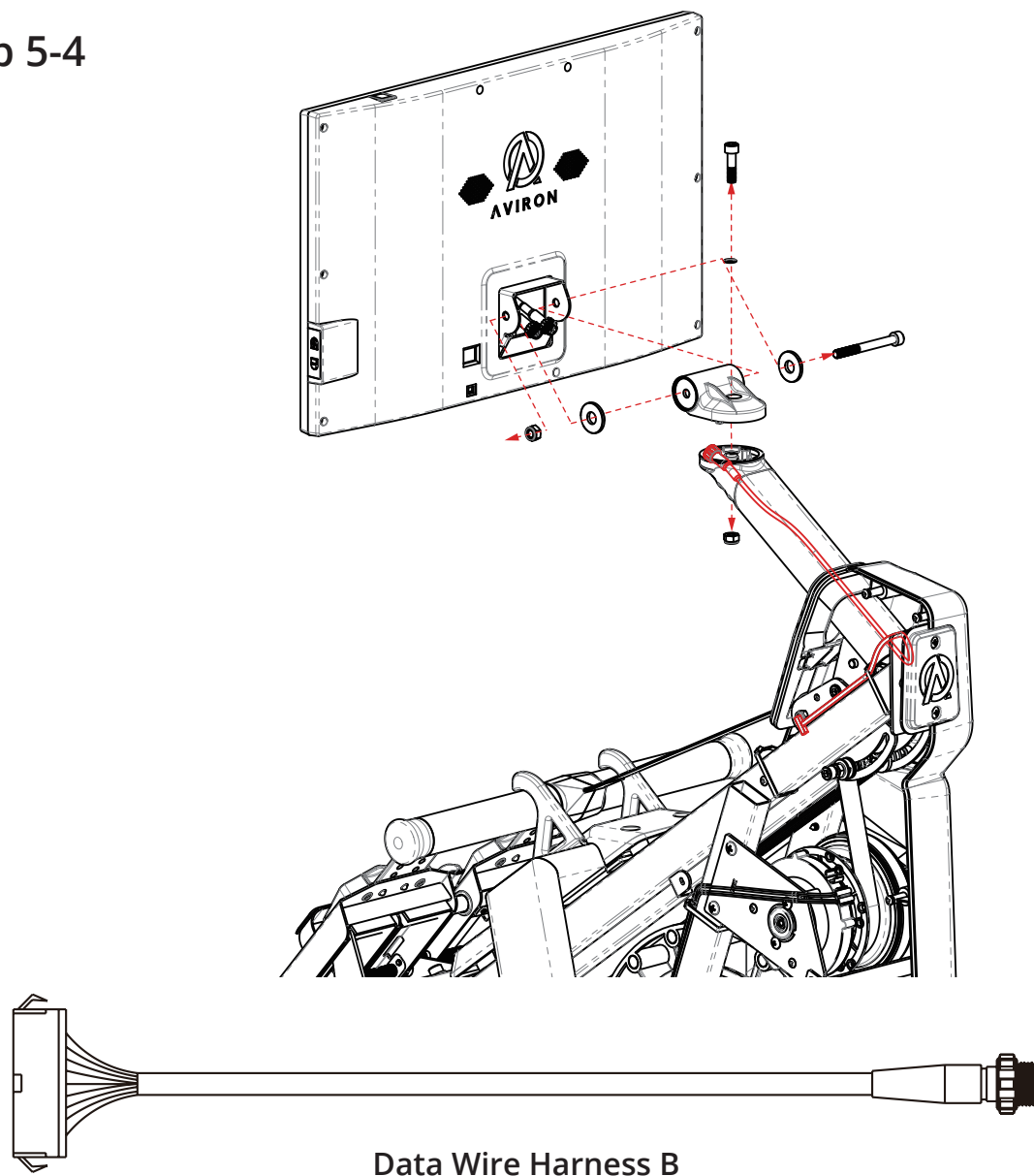
Data Wire Harness A

Parts:

Tools:

Fasteners:

Step 5-4

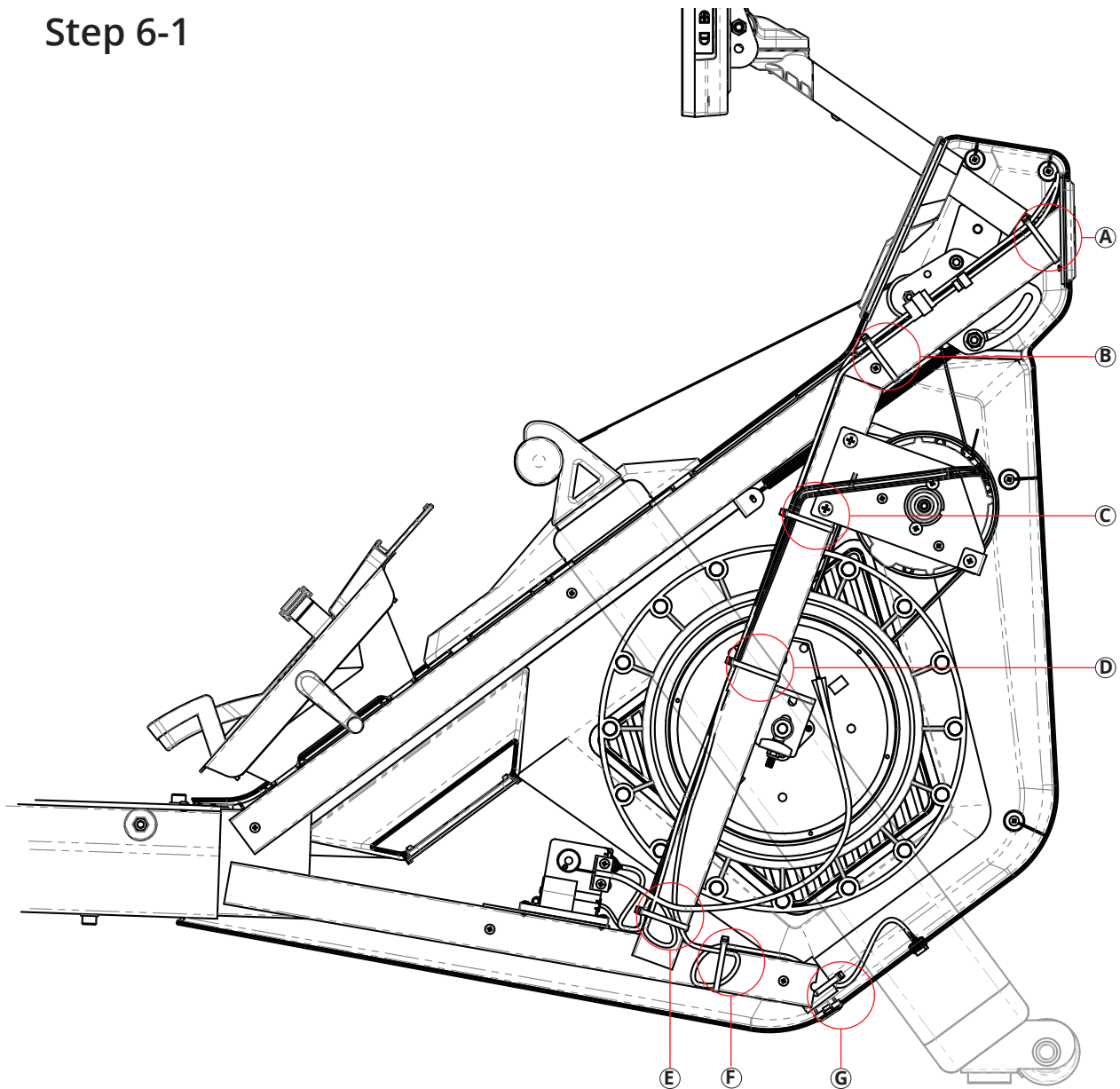


Parts:

Tools:

Fasteners:

Step 6-1



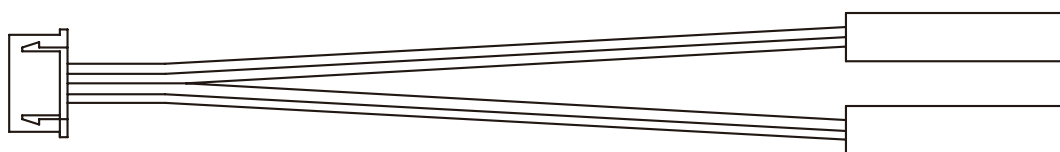
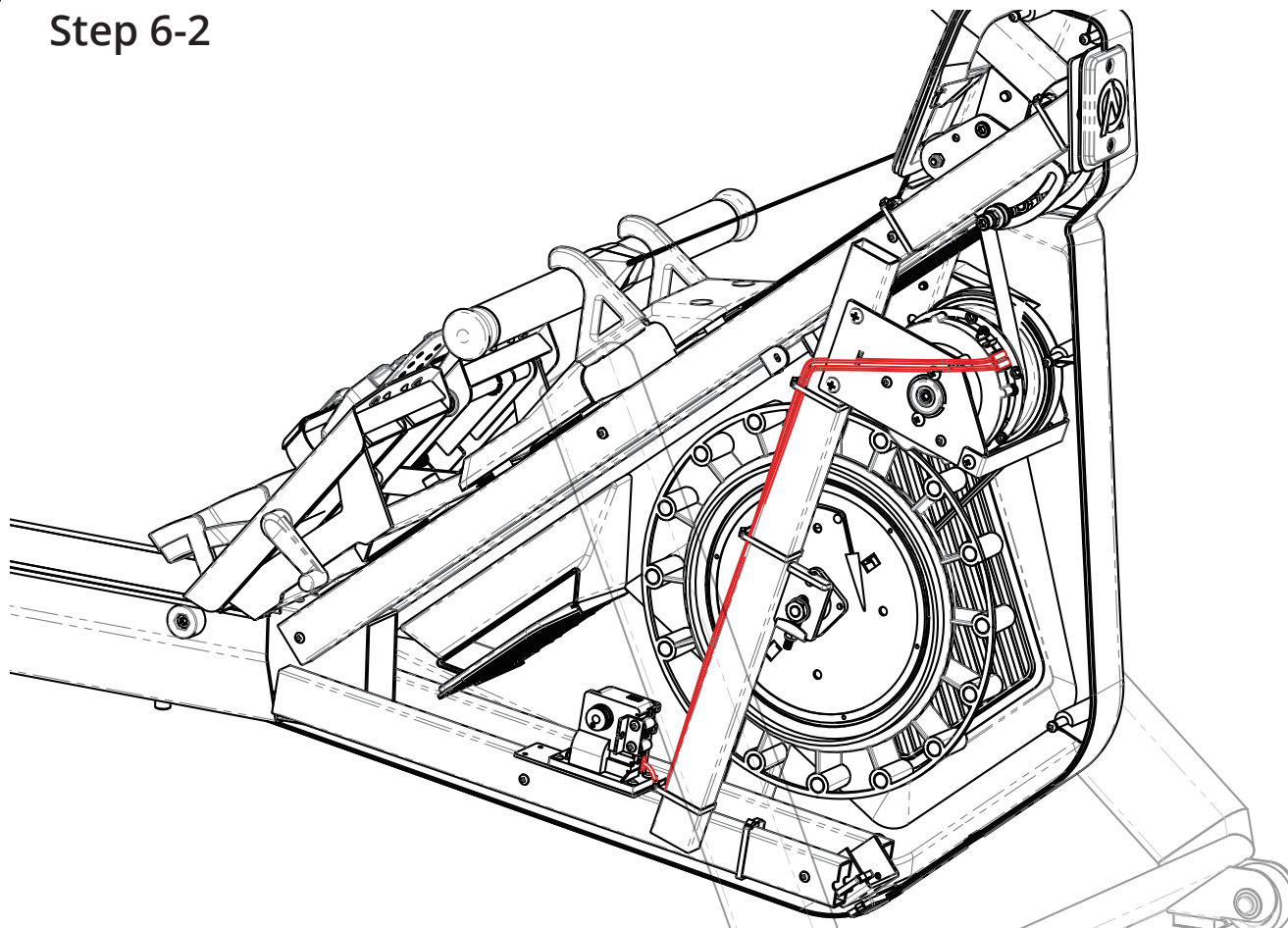
Parts:

Tools:

Fasteners:

Cut zip ties C-E. Upon completion of replacement, add zip ties C-E. Be careful to not zip tie tension cable.

Step 6-2



Sensor Wire Harness

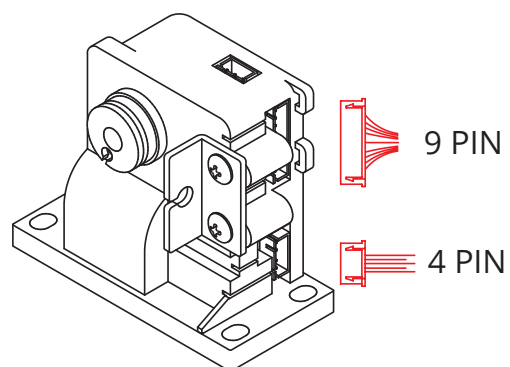
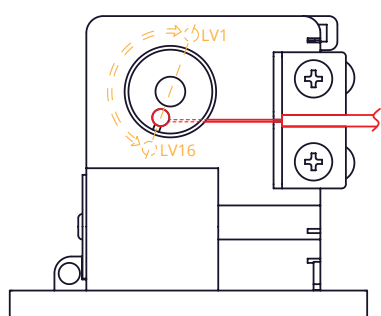
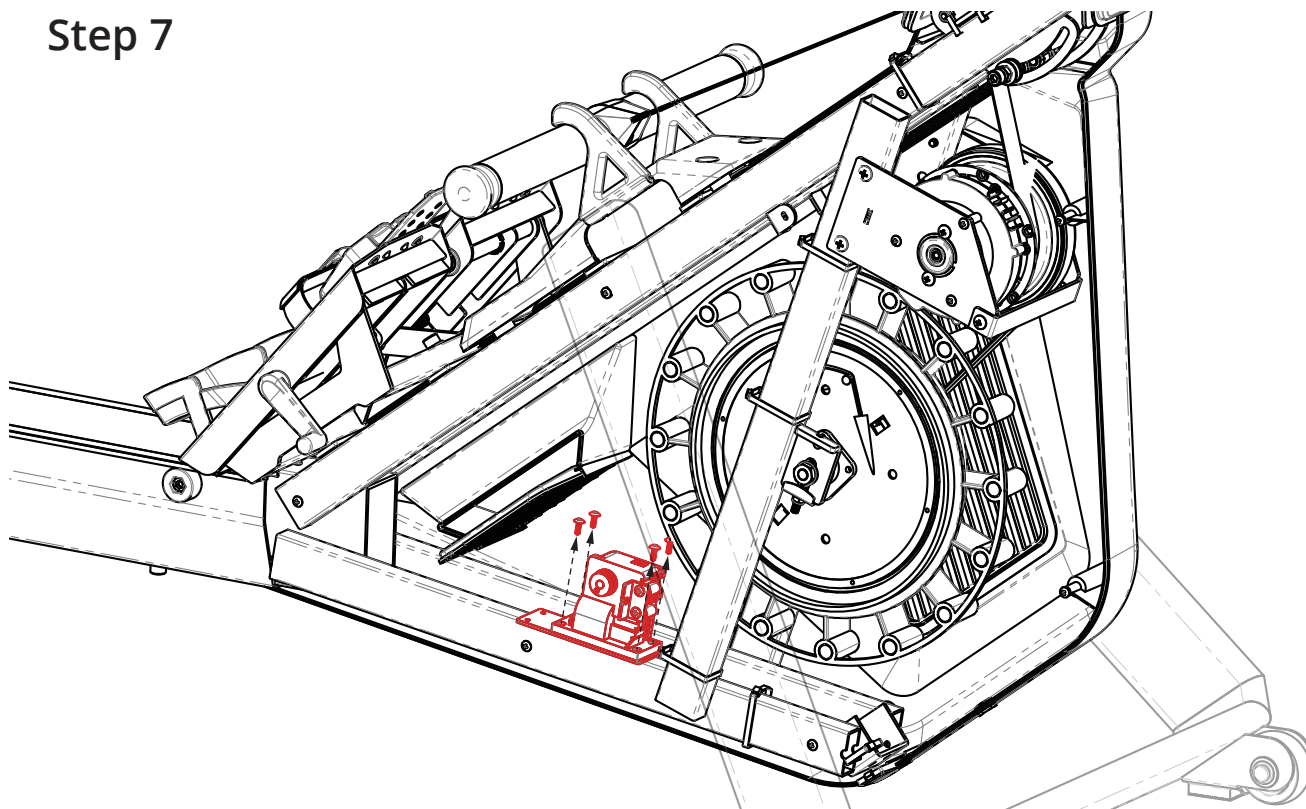
Parts:

Tools:

Fasteners:

Ensure sensors are placed 2-3mm away from the pulley when re-installing. The red wire sensor should be positioned closer to the front end of the rower than the black wire sensor (you may want to take a picture before replacement for reference)."

Step 7



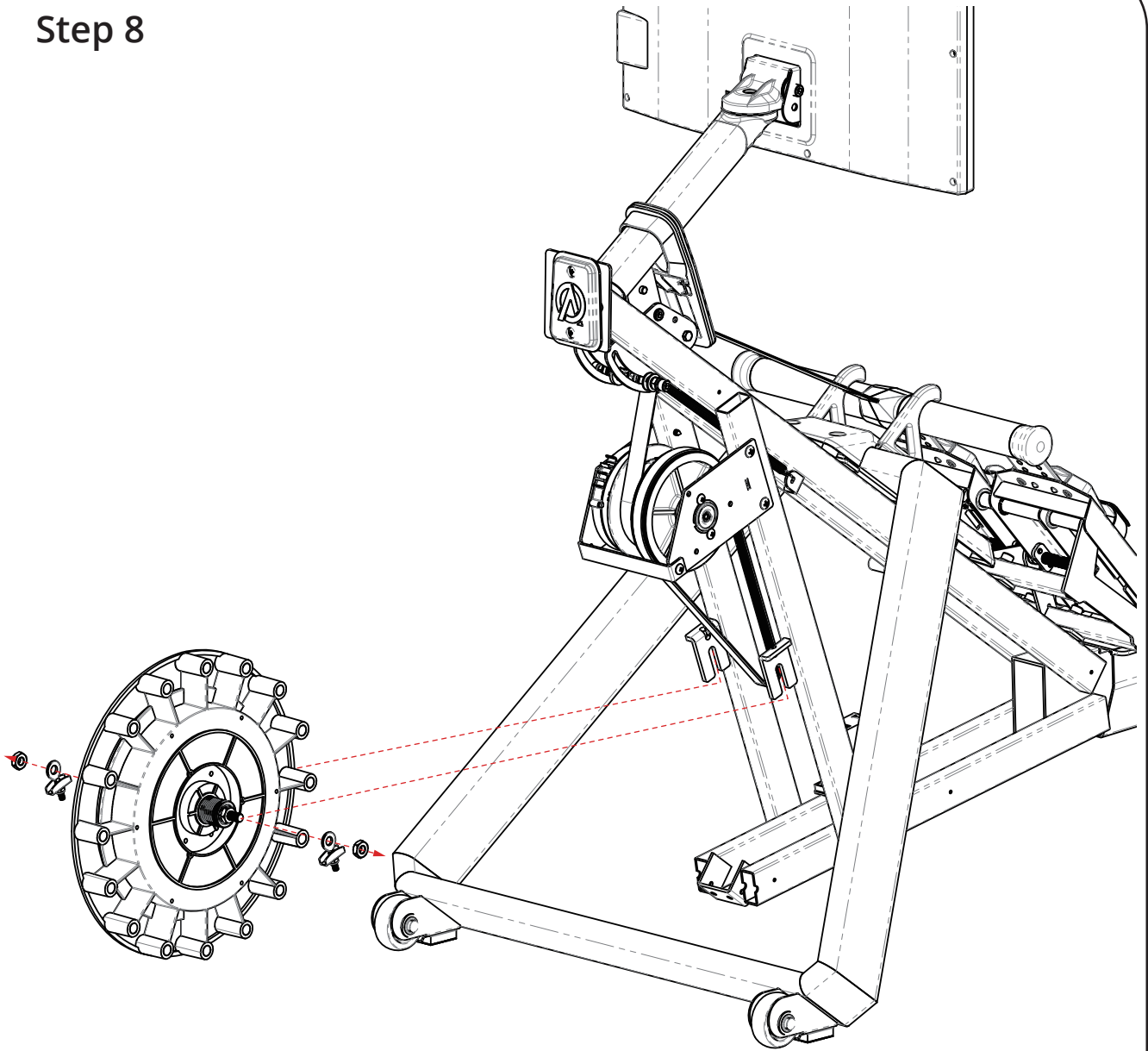
Parts:

Tools:



Fasteners:

Step 8



Parts:

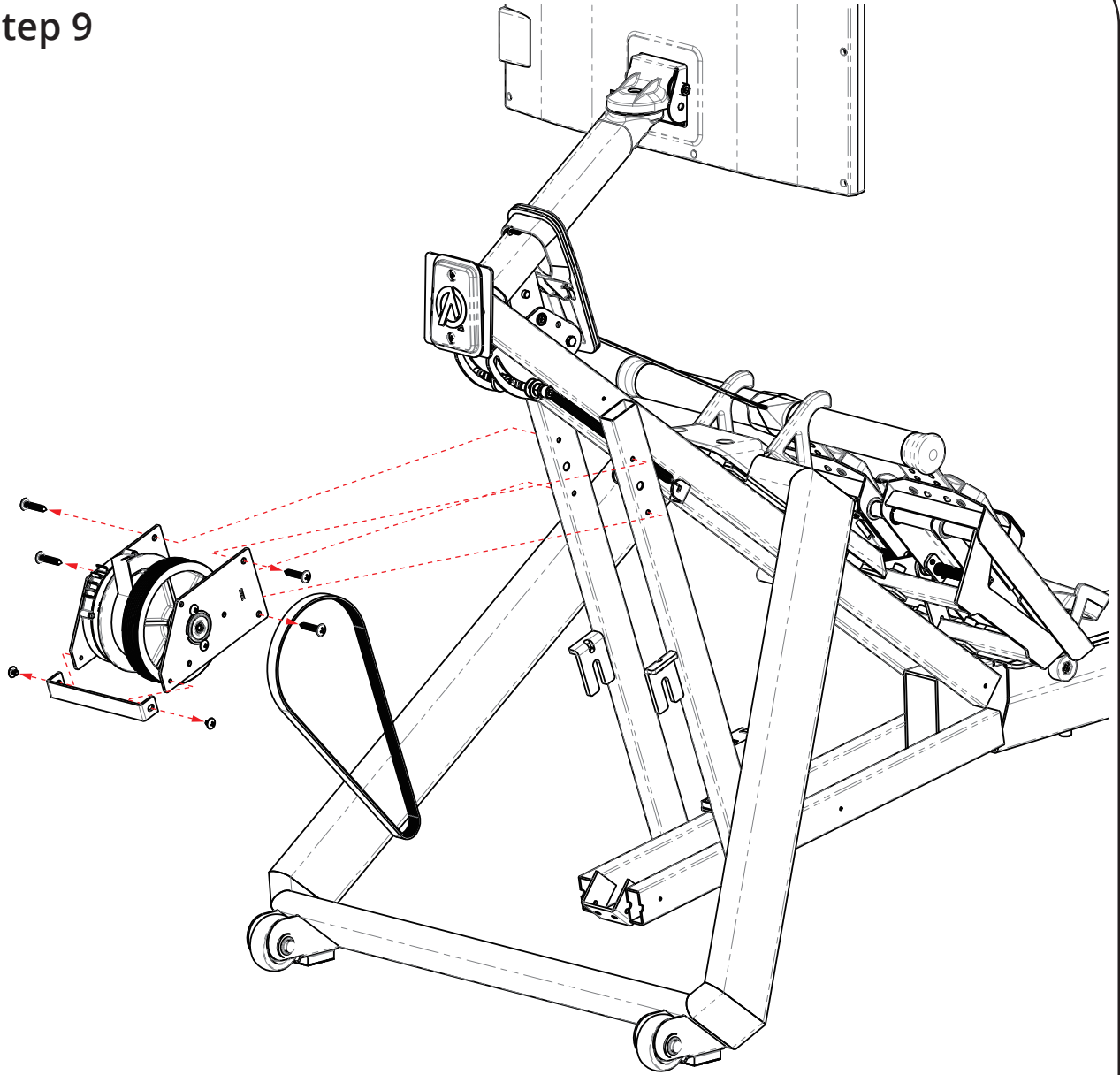
Tools:



Fasteners:

Important! If sensors were removed during this step, ensure sensors are placed 2-3mm away from the pulley when re-installing. The red wire sensor should be positioned closer to the front end of the row than the black wire sensor (you may want to take a picture before replacement for reference).

Step 9



Parts:

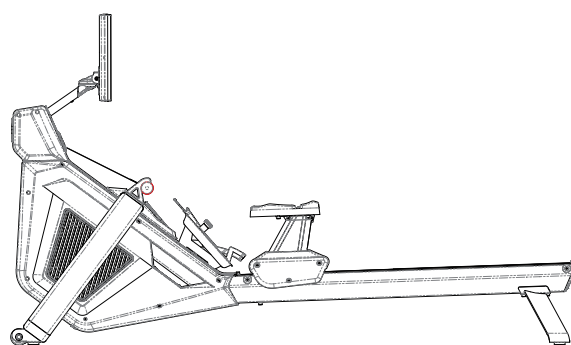
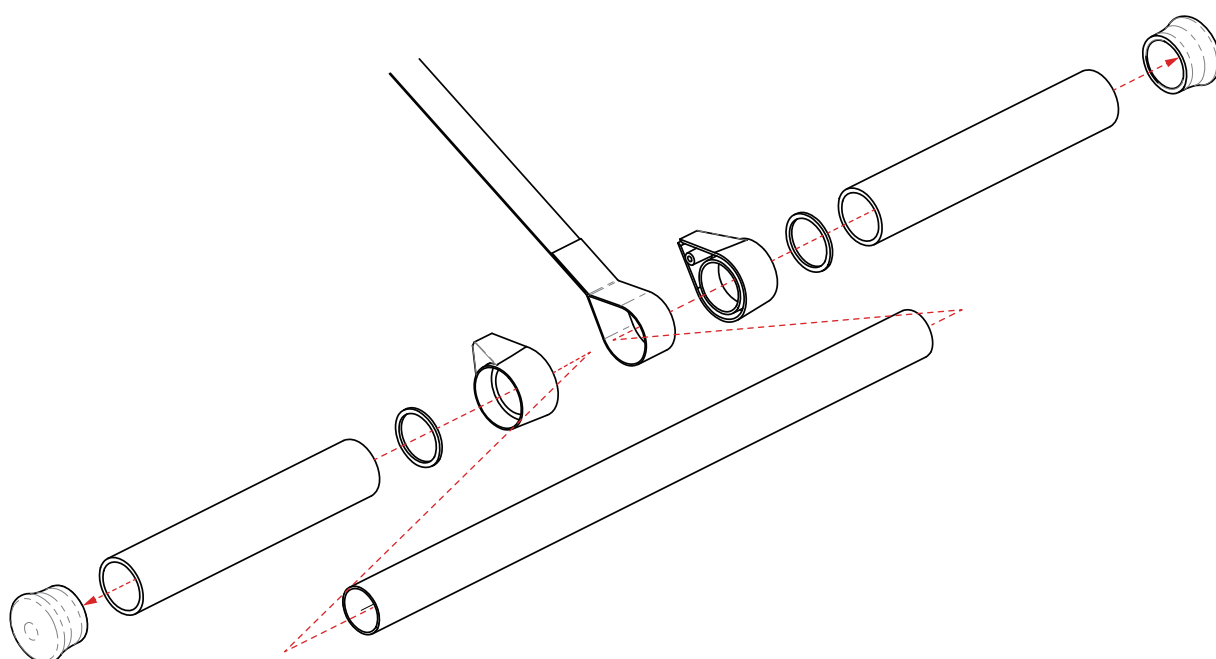
Tools:



Fasteners:

Important! If sensors were removed during this step, ensure sensors are placed 2-3mm away from the pulley when re-installing. The red wire sensor should be positioned closer to the front end of the rower than the black wire sensor (you may want to take a picture before replacement for reference).

Step 10



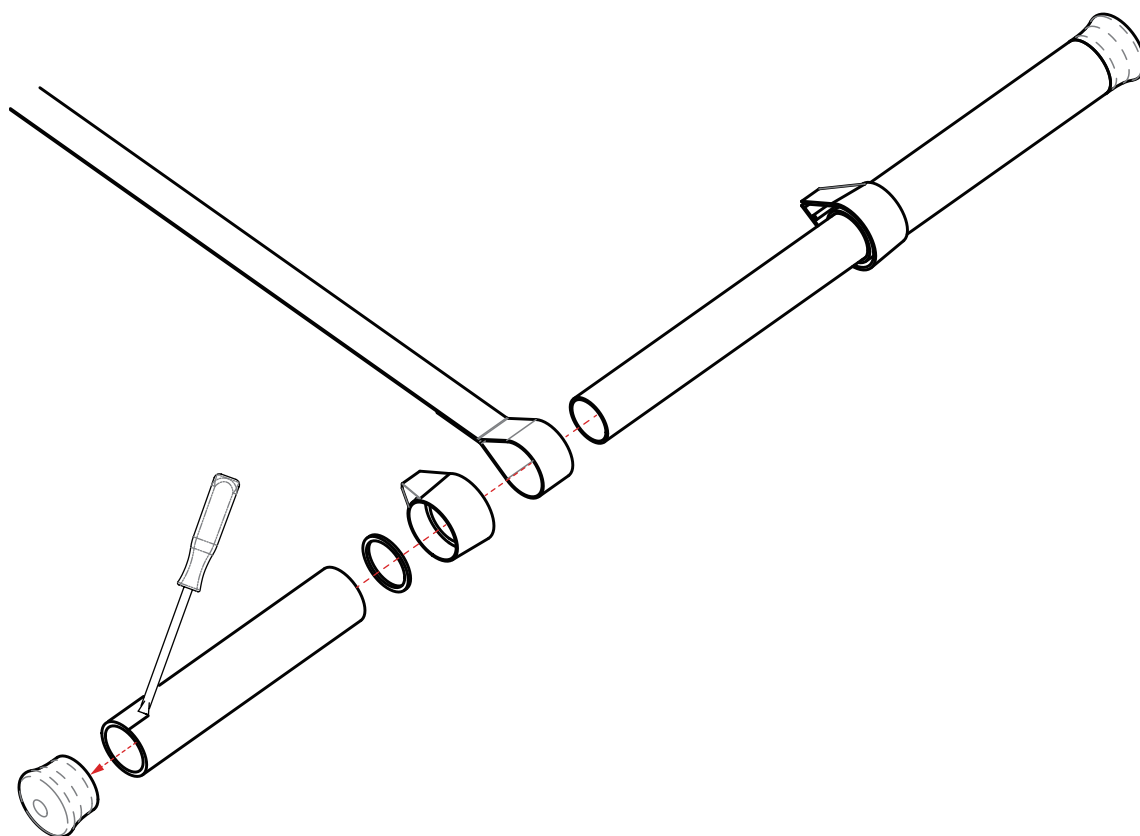
Parts:

Tools:

Fasteners:

Important! Securely tie the belt to the rower before disassembling the handlebar to prevent the belt from retracting into the rower. If the belt is lost inside the rower, it is difficult to repair and could damage the internal mechanism.

Step 10



Parts:

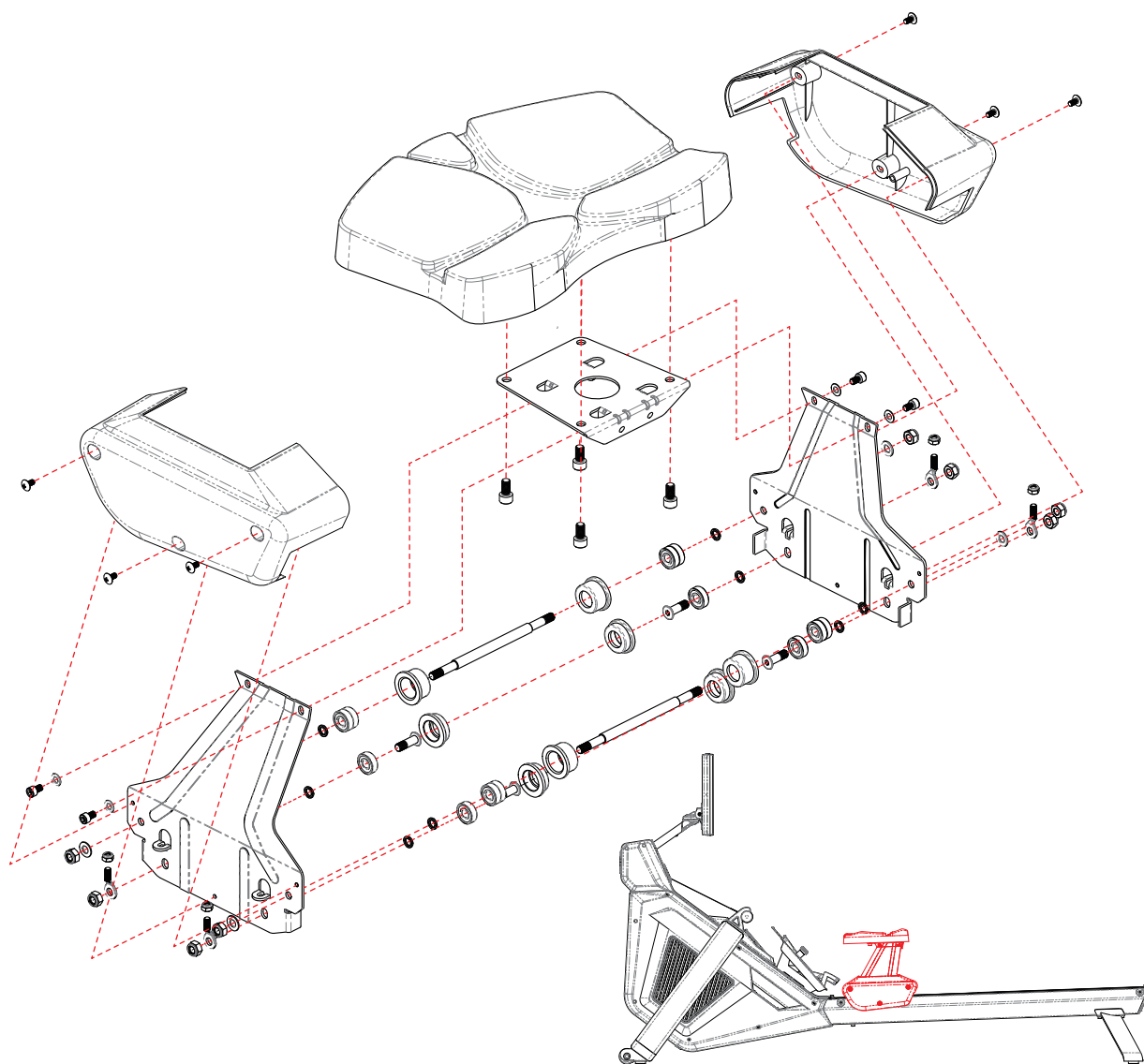
Tools:

Fasteners:



Important! Securely tie the belt to the rower before disassembling the handlebar to prevent the belt from retracting into the rower. If the belt is lost inside the rower, it is difficult to repair and could damage the internal mechanism.

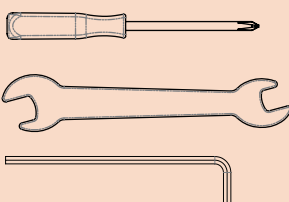
Step 11



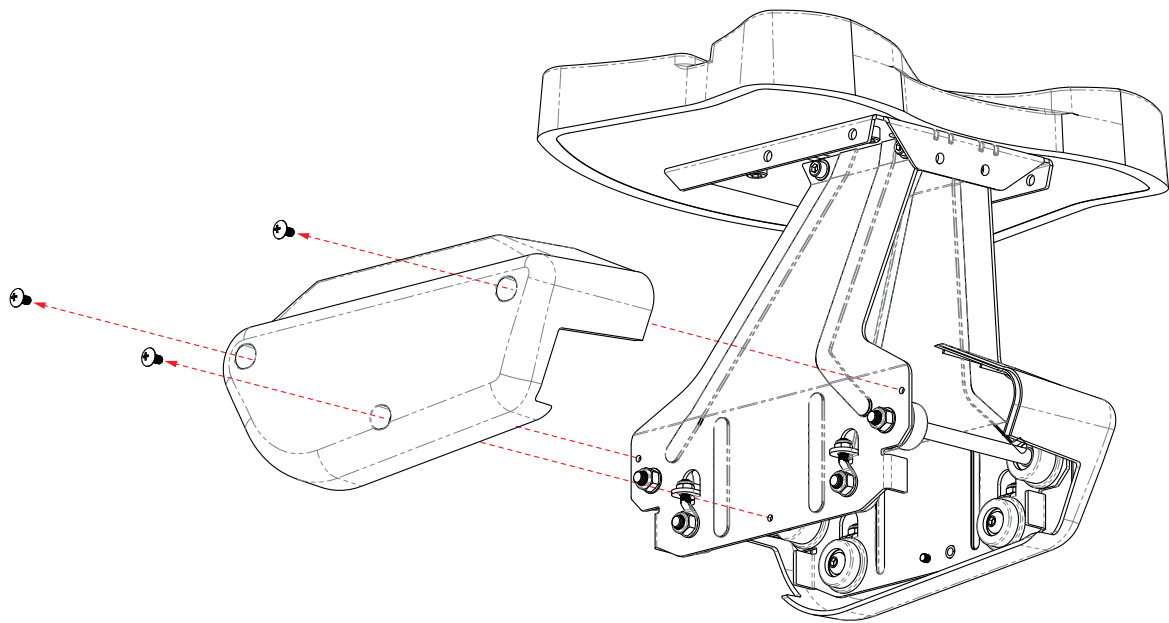
Parts:

Tools:

Fasteners:



Step 11-1



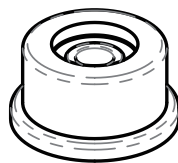
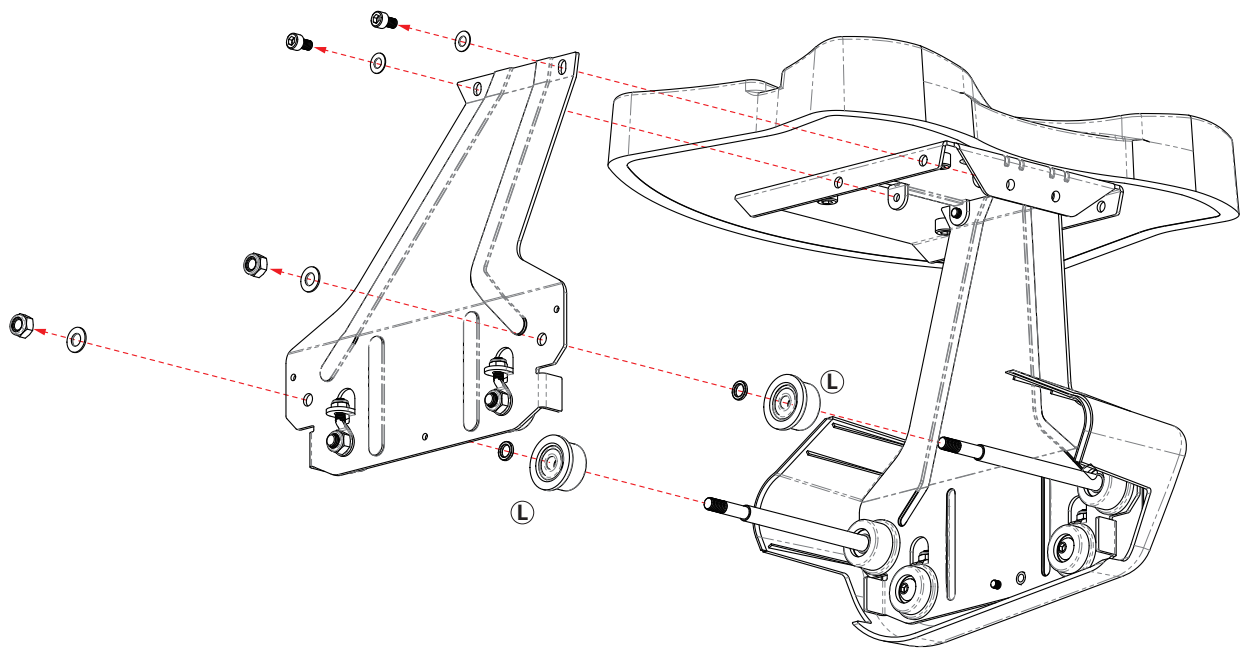
Parts:

Tools:

Fasteners:



Step 11-2

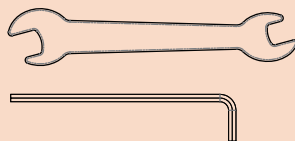


Roller - L

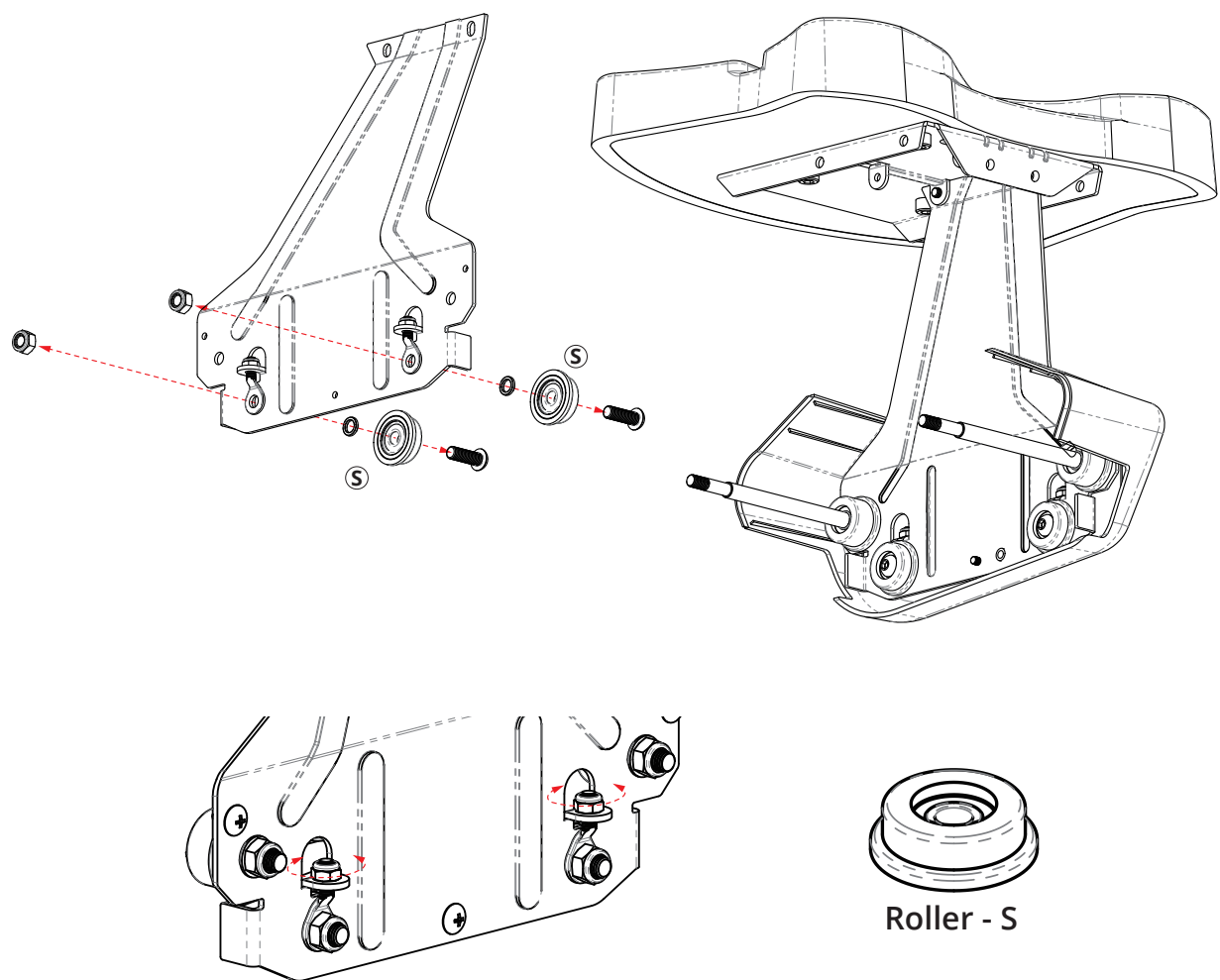
Parts:

Tools:

Fasteners:



Step 11-3



Parts:

Tools:

Fasteners:

